



## AUTHORIZING LEGISLATION

NEW JERSEY LAW ALLOWS COUNTIES TO SUBMIT TO THE VOTERS A PROPOSITION AUTHORIZING IMPOSITION OF AN ANNUAL LEVY WITH THE AMOUNTS RAISED BY THE LEVY TO BE DEPOSITED IN A "COUNTY OPEN SPACE, RECREATION, AND FARMLAND AND HISTORIC PRESERVATION TRUST FUND" AND USED EXCLUSIVELY FOR THE PURPOSES PERMITTED BY LAW.

The block contains a decorative graphic on the left with an orange arrow pointing right and blue wavy lines. The main text is in a bold, sans-serif font. Below the text is a photograph of a wooden gavel on a stack of books with 'LAW' written on their spines.

## PERMITTED USES OF TRUST FUND

- ACQUISITION, DEVELOPMENT & MAINTENANCE OF LAND FOR RECREATION AND CONSERVATION PURPOSES
- ACQUISITION OF FARMLAND FOR FARMLAND PRESERVATION PURPOSES
- HISTORIC PRESERVATION
- PAYMENT OF DEBT SERVICE ON INDEBTEDNESS ISSUED FOR ABOVE PURPOSES



## VOTER APPROVED DEDICATED FUNDING SOURCE

1996 REFERENDUM AUTHORIZED COLLECTION OF UP TO 2 CENTS PER \$100 OF EQUALIZED VALUATION UNTIL 2011

1998 REFERENDUM AUTHORIZED COLLECTION OF AN ADDITIONAL 2 CENTS UNTIL 2018

2006 REFERENDUM AUTHORIZED COLLECTION OF UP TO 4 CENTS UNTIL 2036



## ANNUAL AUTHORIZATION AND ALLOCATION OF FUNDS

Each year, following a public hearing, the Freeholder Board must approve the amount to be raised by the dedicated levy and allocate the funds raised to the permitted uses.



- ✦ Farmland Preservation
- ✦ Open Space Preservation
- ✦ Park Development & Maintenance/Historic Preservation
- ✦ Discretionary



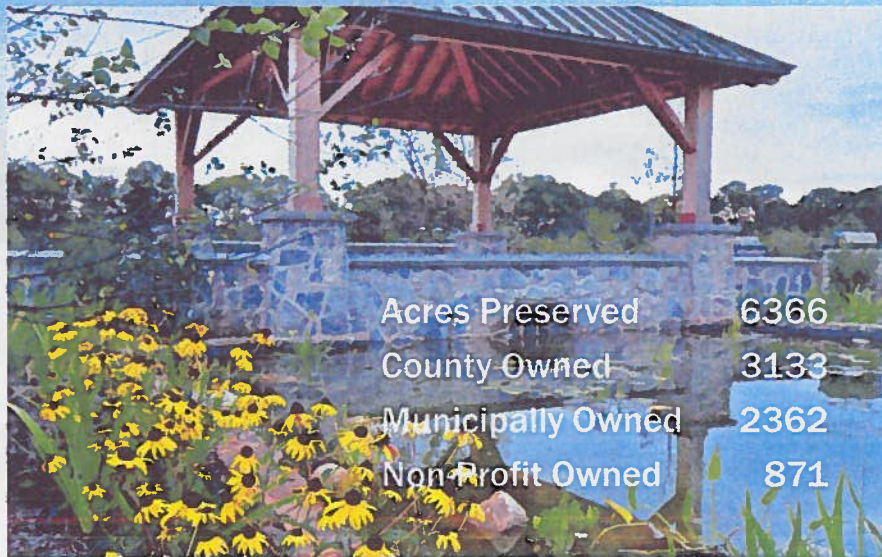
## Farmland Preservation

SIGNIFICANT MILESTONE REACHED IN 2017!  
Over 30,000 Acres and 250 Farms Preserved Under the  
County's Easement Purchase Program



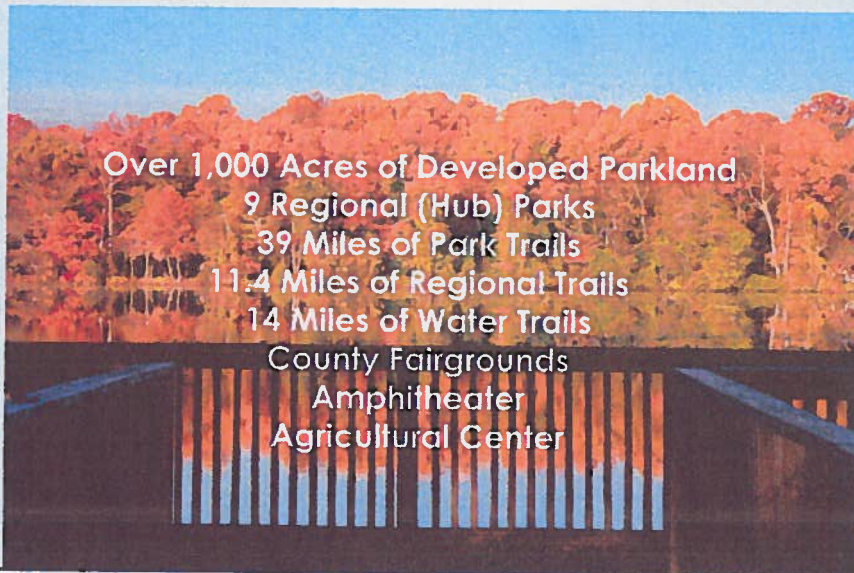
61,472 Acres Total Acres of Preserved Farmland  
Top 10 counties in the nation as far as acres of preserved farmland

## OPEN SPACE PRESERVATION



Acres Preserved	6366
County Owned	3133
Municipally Owned	2362
Non-Profit Owned	871

## PARK DEVELOPMENT



## Historic Preservation

- ✦ Major Improvements at Historic Smithville Park
- ✦ Major Renovations to Historic Prison Museum and Warden's House
- ✦ Renovation of Lyceum of History and Natural Sciences



# Municipal Park Grant Program

Between 2010 and 2016, the County allocated \$35 Million to municipalities for improvements to recreational facilities.

In the past 7 years, over 225 park improvement projects have been funded!



A dedicated funding source along with a demonstrated commitment to land preservation and park development has helped the County secure outside sources of funding. To date, Burlington County has received over **\$139 million** from partner agencies including Federal, State & Local governments.

The County's land preservation and park development programs have been recognized across the Country and within the State.



## 2017 HIGHLIGHTS

ACREAGE OF PRESERVED FARMLAND TOPS 30,000!!!

COMPLETED MAJOR IMPROVEMENTS TO FAIRGROUNDS AND AGRICULTURAL CENTER

AWARDED 7<sup>TH</sup> ROUND OF MUNICIPAL PARK GRANTS

BEGAN RENOVATIONS TO THE LYCEUM OF HISTORY AND NATURAL SCIENCES



## PARK EVENTS

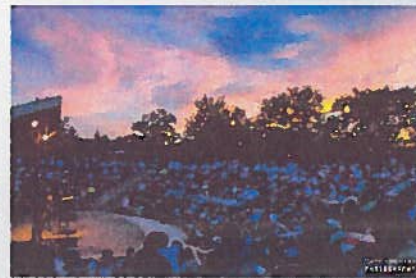
Over 20,000 visitors attended major events at Historic Smithville Park

- Victorian Times - May
- Earth Fair - June
- Arts in the Park - September
- Fall Float - October
- Victorian Holiday Event - December



## PARK PROGRAMS

- 215 NATURE PROGRAMS
- JUNIOR RANGER & YOUNG NATURALIST PROGRAMS HELD FOR 9<sup>TH</sup> YEAR
- 64 HISTORY LECTURES
- 5 HISTORIANS' ROUNDTABLES
- 12 LYCEUM LECTURE SERIES PROGRAMS
- TEEN ARTS FESTIVAL – ATTENDED BY OVER 2,000 STUDENTS FROM 21 MIDDLE SCHOOLS AND 15 HIGH SCHOOLS
- 36 AMPHITHEATER PERFORMANCES



## PARK FACILITY USE

- Over 1 Million Park Visitors!
- 624 Pavilion Rentals
- 39 Wedding Receptions
- 12 Wedding Ceremonies
- 31 Private Parties
- 21 Walks/Runs
- 27 Ghost Hunts
- 35 Events at County Fairgrounds





## AGRICULTURAL CENTER


11<sup>TH</sup> SEASON OF FARMERS MARKET  
MORE VENDORS, MORE SHOPPERS!!

17 COOKING CLASSES IN FARMHOUSE KITCHEN

100 PLOTS IN NEW COMMUNITY GARDENS FILLED



## WHAT'S IN STORE FOR 2018



## FARMLAND PRESERVATION

2018 PROGRAM PRIORITIES:

- CONTINUE TO PRESERVE FARMS
- ONGOING MONITORING/STEWARDSHIP
- ADDRESS RIGHT TO FARM ISSUES
- SUPPORT AGRICULTURAL COMMUNITY AS FARMING CONTINUES TO EVOLVE
- REPLACE PRESERVATION SIGNS



## OPEN SPACE PRESERVATION

Focus on acquisition of small tracts needed to enable trail connections, including Smithville Lake perimeter trail



## PARK PROGRAMS




September 9	Arts in the Parks
October 14	Fall Foliage Float Festival
December 2	Victorian Holiday Event

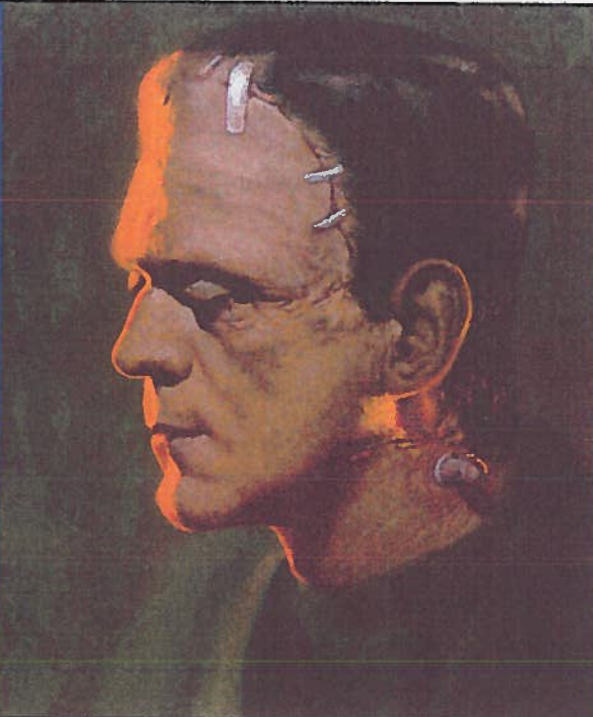
## EXHIBITS

**ART GALLERIES**

- ▶ Wardens House
- ▶ Smithville Annex
- ▶ Workers House

**HISTORY**

- ▶ Smithville Mansion
- ▶ Historic Prison Museum
- ▶ Lyceum






**Burlington County  
AGRICULTURAL CENTER**  
500 Centerton Road | Moorestown, NJ 08057



**COUNTY FARMERS MARKET**  
Saturdays 8:30 am – 1 pm  
Music  
Cooking Demonstrations  
Fitness Classes



**COOKING CLASSES**  
New Classes! New Instructors!



**COUNTY FAIRGROUNDS**

Shriner's Circus	June 28 – July 1
County Farm Fair	July 17 – July 21
Italian American Festival	September 7 – 8
Tractor Pulls	April to October
Equestrian Events	April to October

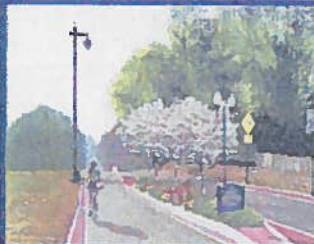






## SMITHVILLE PEDESTRIAN & BICYCLE ENHANCEMENTS

- Provide multi-use trails for pedestrians and cyclists on Smithville Road from Powell Road to Route 38
- Connect new trails to existing Park Trail network
- Slow Traffic through Historic Section of Park



## LYCEUM OF HISTORY & NATURAL SCIENCES

- Major Renovations to 1840 Building
- structural and building envelop upgrades
- improvements for handicapped accessibility
- upgrades to interior lighting and finishes
- new heating system
- parking lot expansion
- Ribbon cutting ceremony coming soon!
- Museum Plan under development



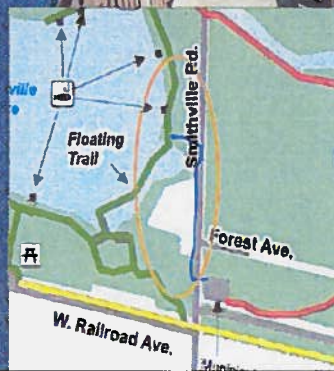
## HISTORIC SMITHVILLE MASTER PLAN

- Continued assessment of 25 structures in the Historic District
- Prioritization of repairs and renovation



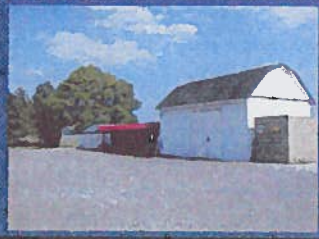
## SMITHVILLE FLOATING TRAIL

- 600 LINEAR FOOT FLOATING TRAIL WAS CONSTRUCTED IN 2005
- PLASTIC LUMBER RAILING AND SUPPORTS HAVE WARPED; ANTI-SLIP GRAINING DETERIORATED
- TRAIL CLOSED IN 2017
- NEW TRAIL CONSTRUCTED TO CONNECT TRAIL NETWORKS ON OPPOSITE SIDES OF SMITHVILLE ROAD WHILE FLOATING TRAIL IS BEING REPLACED



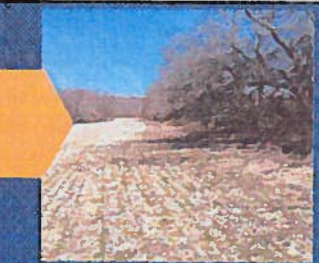
## PARKS STORAGE FACILITY

- 2018 Design
- 2019 Construction
- New facility at Smithville to consolidate storage of equipment and supplies that are currently being stored at multiple locations. A single facility would enable better control over inventory.



## ARNEY'S MOUNT TRAIL, PHASE 1

- 2018 Design & Permitting
- 2019 Construction
- 2.5 mile hiking, biking and equestrian trail around highest elevation in Burlington County
- Trailhead with access from Juliestown Road
- Picnic Area with rental pavilion
- County awarded \$3M in TIP Quick Obligation Grant for construction



## DELAWARE RIVER HERITAGE TRAIL ROUTE 130 BYPASS

- 2018 Design & Permitting
- 2019 Construction
- Trail will connect existing Heritage Trail terminus on CR 662 in Fieldsboro to the Roebling Museum with connection to Crystal Lake Park
- \$3.05M in grant funding received for construction



## RANCOCAS CREEK GREENWAY AMICO ISLAND TO PENNINGTON PARK

- 2018 Completion of Design & Permitting
- 2019 Construction
- 3.5 Mile Regional Trail Segment
- 2.5 miles off-road & 1 mile bike lanes
- \$2.9M Grant will cover 100% of construction cost



Rancoocas Creek  
Greenway Trail

TRAIL  
HEAD





## RECOMMENDATION FOR 2018 LEVY

★ Assess 2.5 Cents

★ Allocate Funds to Park Development & Maintenance & Historic Preservation

## 2018 PROPOSAL TO RAISE 2.5 CENTS

Revenues:	
Amount to be Raised by Taxes	11,807,292
Other Income	3,800,000
Reserves	5,073,103
Total Revenue	20,680,395
Appropriations:	
Salary and Wages	2,580,067
Other Expenses	3,173,985
Development of Land for Recreational Purposes	7,600,000
Acquisition of Farmland and Open Space	625,000
Debt Service	6,701,343
Total Appropriations	20,680,395
Opening Balance	15,648,587
Reserves Anticipated in 2017 Budget	5,073,103
Ending Balance	10,575,484

